



**Norwood Road, Herne Hill, SE24**

3 bedroom flat - conversion for sale

**£750,000**

Leasehold

## Property Details

An outstanding three double bedroom, three bathroom apartment with a beautifully landscaped two-tier South-East facing garden and courtyard access from every bedroom, set within a smart Victorian property overlooking Brockwell Park in the heart of Herne Hill. Spanning two floors and finished to a high standard when converted in 2021, this unique home boasts an exceptional open-plan reception with striking architectural features, skylights, and tri-fold doors forming a show-stopping corner that seamlessly connects to the garden. The shaker-style kitchen includes generous storage, a breakfast bar, and ample room for entertaining. Each double bedroom is well-proportioned and peaceful, all with fitted wardrobes and courtyard access. Two enjoy en-suite shower rooms, while the third is adjacent to a luxurious bathroom with tub. The garden is a tranquil suntrap, designed for easy upkeep with faux lawns, mature planting, and modern fencing. Situated moments from a Brockwell Park entrance, this home blends serene living with superb connectivity. There are few properties available with as many positive attributes as this spacious and unique home. Early registration of interest is advised.

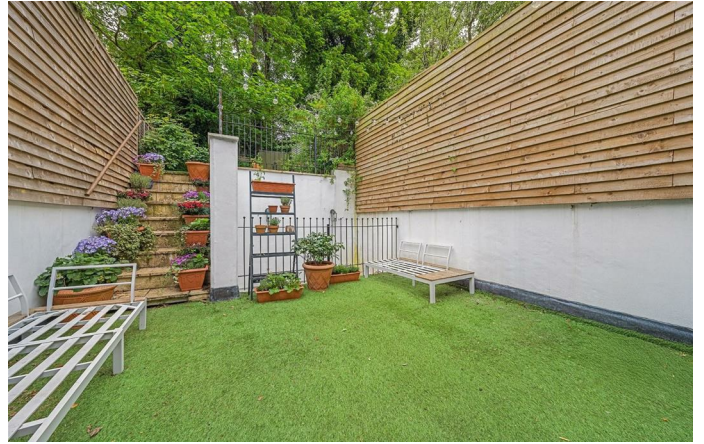
Council tax band D

EPC rating C (73)

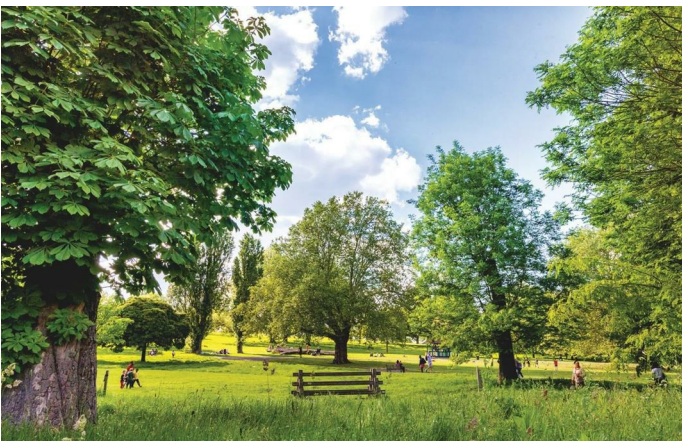
## Features

- Three double bedrooms all with outdoor access
- Three bathrooms
- South-East facing landscaped garden over two-tiers
- Victorian conversion
- Almost 950 square feet split over two floors
- Set back quietly from the street
- Entrance to Brockwell Park opposite
- Central Herne Hill a six-minute walk
- Brixton within walking distance or a short bus ride
- Chain-free







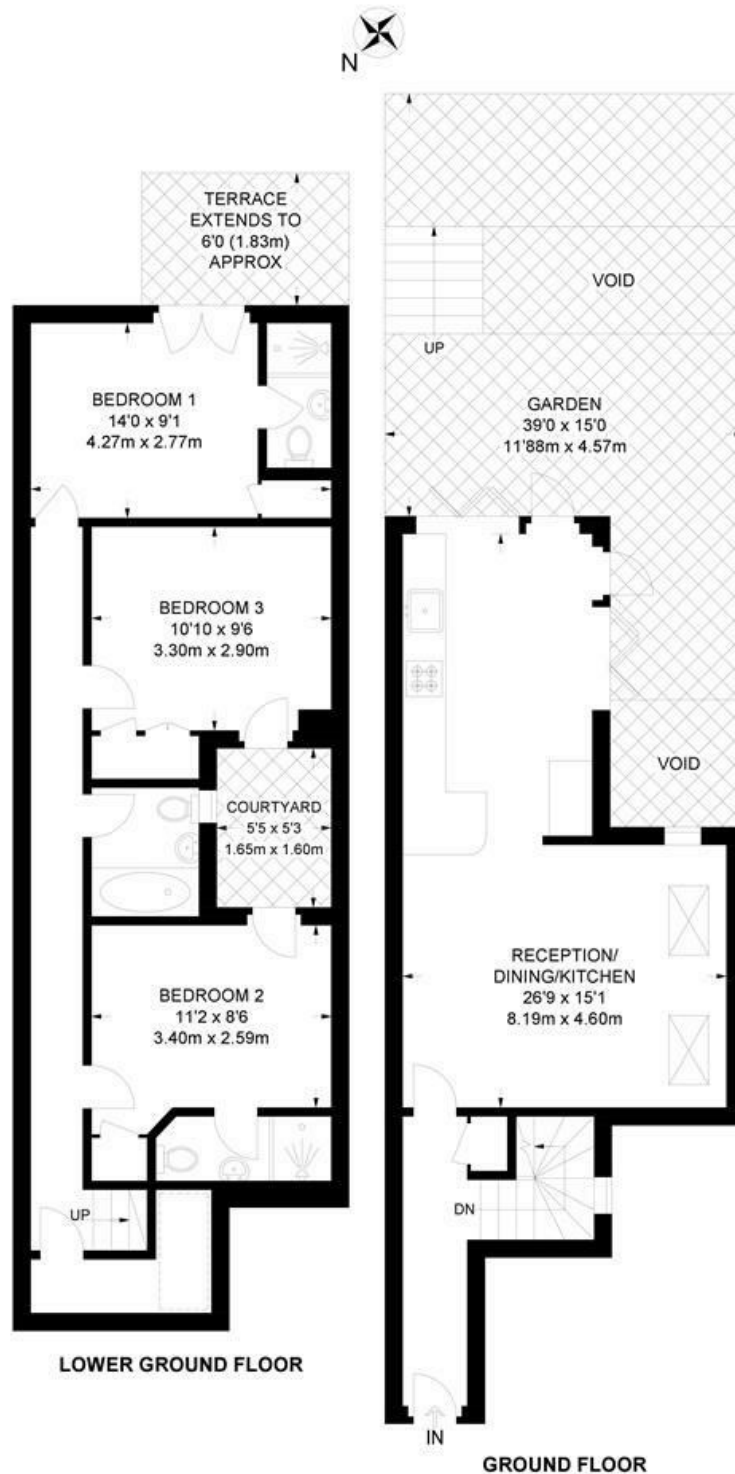


Norwood Road, Herne Hill, SE24

**Norwood Road, SE24**

**3 Bedroom Flat**

APPROXIMATE GROSS INTERNAL AREA: 947 SQ FT / 88 SQ M



While we try our very best, floor plans are produced as a guide only and we take no responsibility for the precise accuracy with which any property is represented.



Norwood Road, Herne Hill, SE24

